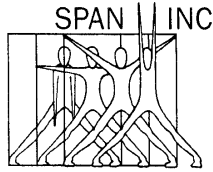


# SPAN, INC.

Fiscal Year 2009

105 Chauncy Street  
Boston, MA 02111  
Phone & TTY: 617/423-0750  
Fax: 617/482-2717  
Email: [Info@Spaninc.org](mailto:Info@Spaninc.org)

A private, non-profit multi-service center for people who are or have been in prison.



105 Chauncy St., Boston, MA 02108  
Phone(Voice & TTY) 617/423-0750 Fax: 617/482-2717

November 2009

FRIENDS:

The financial crisis has had an enormous impact on all of our personal and professional lives in the past few years. Span and the folks we assist in transitioning back into our communities have felt the impact. Unprecedented budget cuts, especially at the state level, have resulted in reductions in programs, services and staff.

In the midst of these cuts, the Board of Directors and senior staff embarked on a re-engineering of the management structure and the service delivery system at Span. Every function and budget expenditure was reviewed with the goal of maximizing our shrinking resources and increasing efficiencies. Everyone at Span deserves our thanks and respect for keeping the mission alive and the good works continuing in these challenging times.

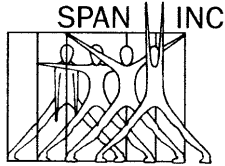
Earlier this year, shortly after being elected the new Chairperson of the Board, I was privileged to attend an informational session at Span attended by the new DOC Commissioner and his Associates. Span clients and staff, many of them former prisoners, shared personal stories of struggle, hope, and success. Many of these lives were transformed because someone at Span made a difference in an otherwise and sometimes uncaring world.

With a strong senior management team in place, the Board is now focusing on developing short and long-term financial strategies to better support Span in the new fiscal environment. This will not be easy work, but together with friends and family, staff, colleagues, business partners and generous benefactors, we will strive to keep transforming lives for another thirty years!

Thank you,

Ed Chase  
Chairperson,  
Board of Directors

Services for prisoners and people who have been in prison.



**SPAN INC**  
**105 Chauncy St., Boston, MA 02108**  
**Phone(Voice & TTY) 617/423-0750 Fax: 617/482-2717**

November, 2009

Friends, Colleagues, and Clients:

It has been 33 years since I had the opportunity to start Span, Inc. At the heart of our work is hope. Individuals come to Span hoping to find what they need to change their lives. Living through obstacles and challenges, years of substance abuse and the damage they have done to themselves and others, the people who come to Span are looking for a better way.

Some have served long sentences, others, shorter ones punctuated by the realization that change is never easy, and never a straight line. While our clients were in prison, their children and families were too. What a gift it has been to share the work, to be part of their efforts to change, and have the chance to welcome so many wonderful people home to stay with their families, children, and our neighborhoods.

Span is a miracle. Small and tightly packed with people who believe that everyone can change and grow, we have kept on, following our clients' brave examples, creating new opportunities based on their needs, stretching resources to the maximum. We learn from our clients every day.

We have worked with more than a thousand people this year. We watched people grow, see their anger abate, see bitterness turn to hope and courage, and resentment to strength and self-determination. I am still lucky enough to spend one day a week in prison, and see clients when they get out. To the individuals who come out of prison, often with just the clothes on their backs and their property in a black plastic bag: my respect and admiration. To our staff: heartfelt thanks, and to our donors and funders: gratitude for your faith in our work.

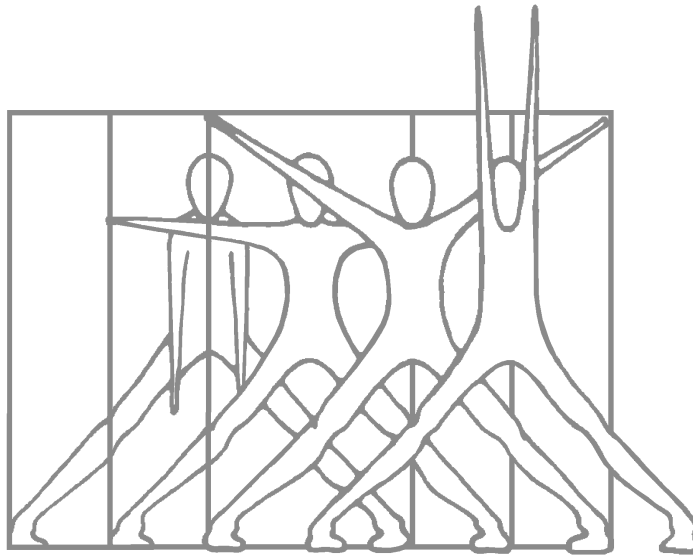
Carry On,



Lyn A. Levy  
Executive Director

## Mission Statement

To assist people who are or have been in prison to achieve healthy, productive and meaningful lives.



## Statement of Principles

We provide peer and professional services tailored to the individual situation to support empowerment, recovery, and health.

We treat people with dignity and respect, encouraging them to take advantage of the life-changing tools we offer. Through this process our clients become assets, not liabilities, to our communities.

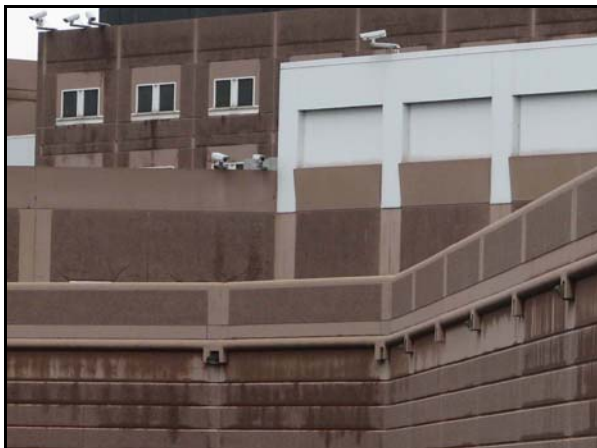
Breaking the cycle of addiction, crime, and imprisonment benefits everyone: victims, offenders, families, and communities. This work has a more positive long-term impact on the human and fiscal costs of crime than systems that serve only as temporary solutions to serious social problems.

## WHY WE DO WHAT WE DO

**Ninety four percent of all MA prisoners will be released.**

Who fills our prisons? Our brothers, sons, mothers and daughters; our friends and children. Most will resume their places as family members, friends, and neighbors. A person who has been in prison needs to find work, housing, health care, relationships and support. Learning to make sound decisions, becoming self reliant and responsible, and developing healthy coping skills are critical components of a successful return to community living. Internal and external conditions pose many barriers. Just learning to access services that are necessary for healthy living is a challenge. Obtaining health care is, in and of itself, a process that can be overwhelming. Regulations sharply restrict employment and housing opportunities, for example. Maintaining hope, working on personal growth, and believing in one's capacity to change is a challenge. It is difficult to sustain the struggle of coping with recovery, keeping a job, and building good relationships. It is our job to assist in this process.

So what? Why should we be concerned? Because we cannot afford to lose generations of men and women to addiction, crime, and incarceration. The richness of our communities must be sustained, nurtured, and grown. With tools and support, the process of reintegration can set the stage for meaningful change. Using the strengths our clients bring, we challenge and reinforce their efforts to improve their lives, and in turn, the lives of those they impact. Working with our clients to achieve stable reintegration is fiscally sound, promotes community safety and, is the right thing to do.



373 men and women released from Suffolk County House of Correction received services at Span

## STORIES

**RW:** After a year in prison, her first and only incarceration, RW's release plan fell through. She came to Span, homeless and without money. She was placed in our Reintegration Support Program where she was housed for one month, participating in a rigorous program of activities. She job-searched with her counselor, and was accepted into a training program that would pay for her housing while she was in training. RW, on her way to graduation, is a regular visitor at Span.



**MG:** He came to Span on federal probation after serving eight years in prison. Unable to read or write English, and facing homelessness when he was released from a halfway house, he got involved in substance abuse counseling voluntarily. This would be the first time MG, now 40 years old, had been out of prison clean and sober since his teens. He worked with Span to find his first job. Out for months now, he is working full time, has moved to a sober housing program, and continues in support services at Span. MG is gradually turning his outlook on life around. He believes in himself.

**PR** got involved with Span in prison. He'd served 20 years overall. "Life on the installment plan," he says. The first few sentences were spent in lockup, he still used drugs, got into fights, and didn't much care. He says he lost hope. When he joined Span, he began to prepare for his release. When he got out, PR continued at Span. He built new relationships and participated actively in treatment. Energized by his first three months out of prison drug free, ever, he enrolled in an academic program, and continued his counseling. Four years later, PR is employed as a carpenter, is active in his community, taking care of his two children, and is providing many clients at Span encouragement. He is still coming to reintegration groups.



## OUR MODEL

**We Begin** services in prison to develop relationships with clients before release.

**We Plan** for release by doing a comprehensive assessment and developing an individual service plan, collaborating with the client to ensure that the plan is tailored to specific needs, and begin implementation prior to release whenever possible.

**We Create and implement** a seamless release involving clients in services immediately upon release at Span and with our community partners.

**We Assist** clients to cope with the challenges of reintegration by addressing the issues that resulted in their incarceration and their experiences in prison.

**We Support** clients in their work to become responsible, active participants in their restoration to our communities by offering strength based services that encourage self-determination and empowerment.

276 HIV positive clients received services at Span this year.



## OUR PROGRAMS

**REINTEGRATION COUNSELING** assists clients in successfully reintegrating from prison to community living. Span provides individual and group services examining practical and emotional issues related to release and addressing negative behaviors learned prior to and during imprisonment. Clients are assisted in their efforts to become more responsible and empowered.

**SUBSTANCE ABUSE COUNSELING** assists clients to address the substance abuse issues in their lives. Span provides intake assessment, individual and group counseling, referral, crisis intervention, and aftercare to assist clients in addressing their addictions. Clients work on issues related to substance use, incarceration, release and stabilization, among others. Substance abuse treatment services at Span are designed to address the special needs of reintegrating offenders, of individuals with HIV, and those on parole.

**CASE MANAGEMENT** assists clients to obtain health care, social, and substance abuse services needed to make a successful re-integration. Case management services are designed for several groups of clients: individuals with HIV, individuals looking for work, and individuals at high risk for contracting or transmitting HIV. Span provides client assessments, discharge planning, individual meetings, telephone sessions, advocacy, and community aftercare. Clients learn to responsibly advocate for themselves, take responsibility for their lives, increase access to services, improve stability and maintain health.



829 Individuals received case management services at Span this year.

**TRANSITIONAL HOUSING PROGRAMS** assist clients who would otherwise be



homeless when released from prison. Span provides six months of safe, transitional housing for individuals who have HIV to address special needs related to HIV and to improve options for obtaining and maintaining permanent housing. A short term rental assistance component supports a minimum of three weeks of housing to clients involved in Span's reintegration

services, who would otherwise be homeless. Clients are guided in their efforts to find alternatives to homelessness, relapse, and criminal behavior.



91 women came to Span directly from MCI Framingham

**PEER SUPPORT AND SHARED MEALS** assist clients to develop social and recreational skills that enhance their ability to live healthy lives without drugs and/or crime. Span provides meals, a safe and drug-free environment, activities and events, internet, voicemail, and tools to assist with job search. Clients begin learning how to live safely, build supportive relationships, and increase their ability to adjust to community living. There are specialized support groups for reintegrating individuals and those with HIV.



**THE GRANT CENTER** offers members a safe space to meet, provide each other support, relax, enjoy games and meals, making transition from prison a friendlier, more supportive experience. Named in honor of Adolph Grant, whose passion for his work, and belief that those who wanted to, could succeed with the right supports, especially from peers, form the basis of the Grant Center. The Center offers members of Span classes, discussion groups, peer support, and skill building opportunities.

Adolph Grant

**HEALTH EDUCATION/HIV PREVENTION** assists clients to learn how to prevent the transmission of HIV, STDs, TB, and HCV and is built into each service we provide, as well as being a part of our intake, assessment, and orientation process. Span provides individual and small group learning opportunities that address health issues, assist with application for health insurance, and assist clients to use the health care system wisely and well. Clients learn how to look after their own health and maximize their health care benefits.



**COMPREHENSIVE RISK COUNSELING AND SERVICES** teaches reintegrating offenders new ways to reduce risky behavior and make a healthy transitional to the community, while providing case management and support. Clients are also provided with harm reduction services and assistance to access health care, use it wisely, and strengthen clients' ability to maintain their health and well being. The program helps client gain new insight into harm reduction and risk management, while taking advantage of strong reintegration services.



**JOB DEVELOPMENT, PLACEMENT, AND ONGOING EMPLOYMENT SUPPORT** assists clients to find and maintain work by offering job development and placement, education, work readiness classes, and mentoring services. When a client finds work, support continues help participants develop long-term career options. Each client is assisted with case management, referral and follow up to services, as well as to address the issues that have made developing a career of productive and satisfying work difficult.

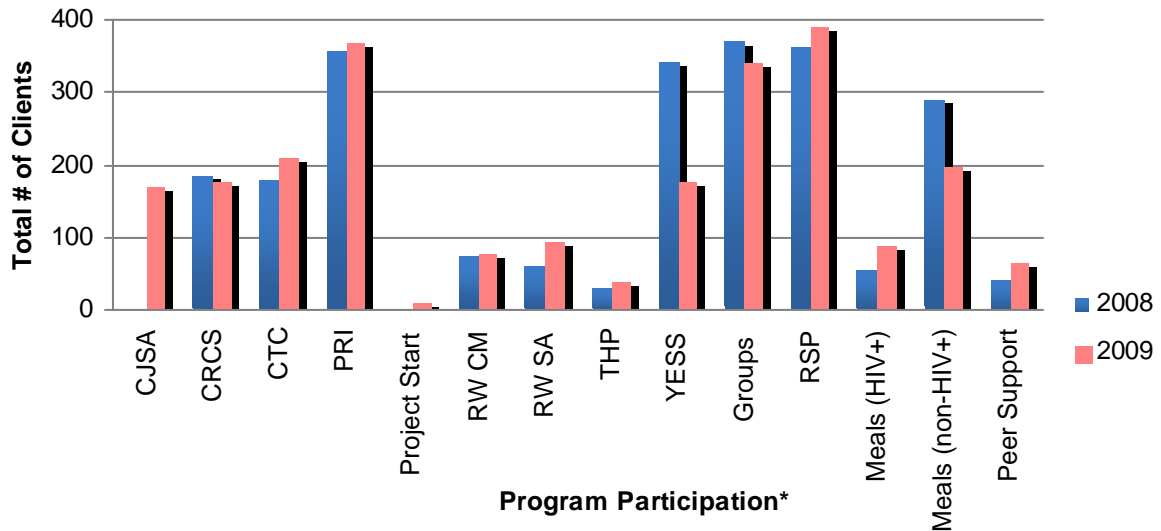
"Thanks, Span. Those classes taught me how to talk about my CORI. I got the job."

KL

## CLIENT AND PROGRAM DATA

Span served 1649 clients in FY 08 (July 1, 2007 to June 30, 2008) and  
1312 clients in FY 09 (July 1, 2008 to June 30, 2009).

### Client Services Utilization



#### Program Key:

CJSA: Criminal Justice Substance Abuse Treatment

CRCS: Comprehensive Risk Counseling and Services

CTC: Corrections to Community

PRI: Prisoner Re-Entry Initiative

Project START: STI Risk Reduction

RWCM: Case Management for clients with HIV

RWSA: Substance Abuse Treatment for clients with HIV

THP: Transitional Housing Program for clients with HIV

YESS: Youth Entering Society Services

Groups: Rehabilitation Service Groups

RSP: Reintegration Support Program

Meals HIV/Meals Non-HIV: group meals

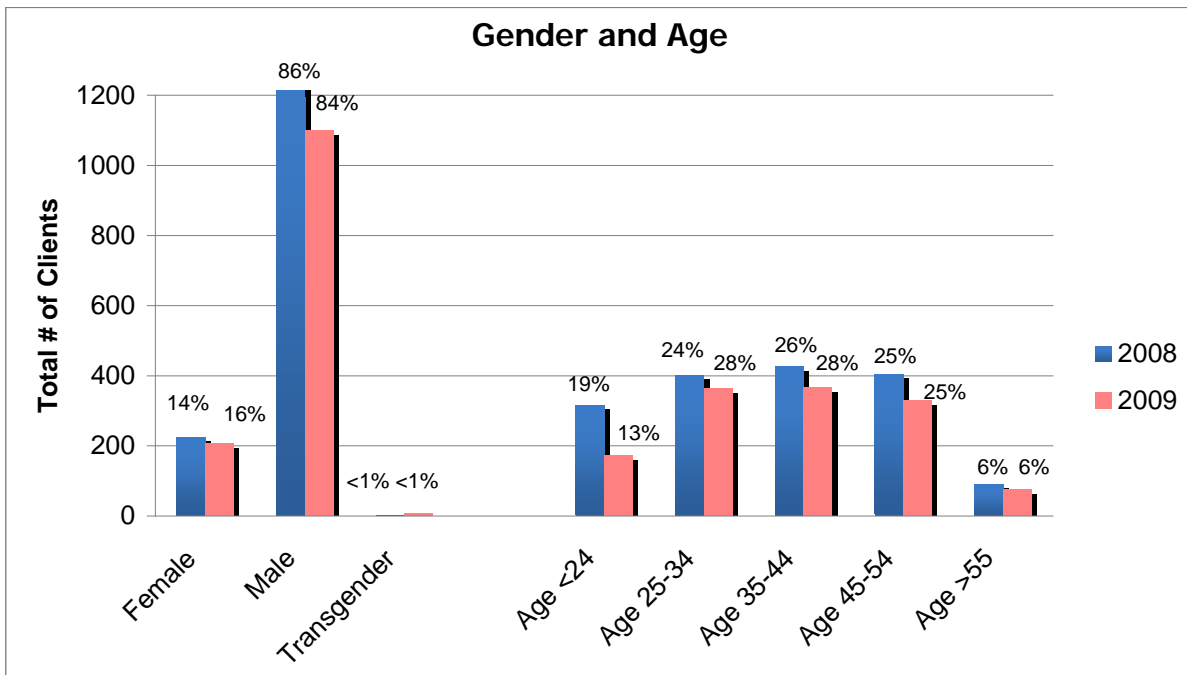
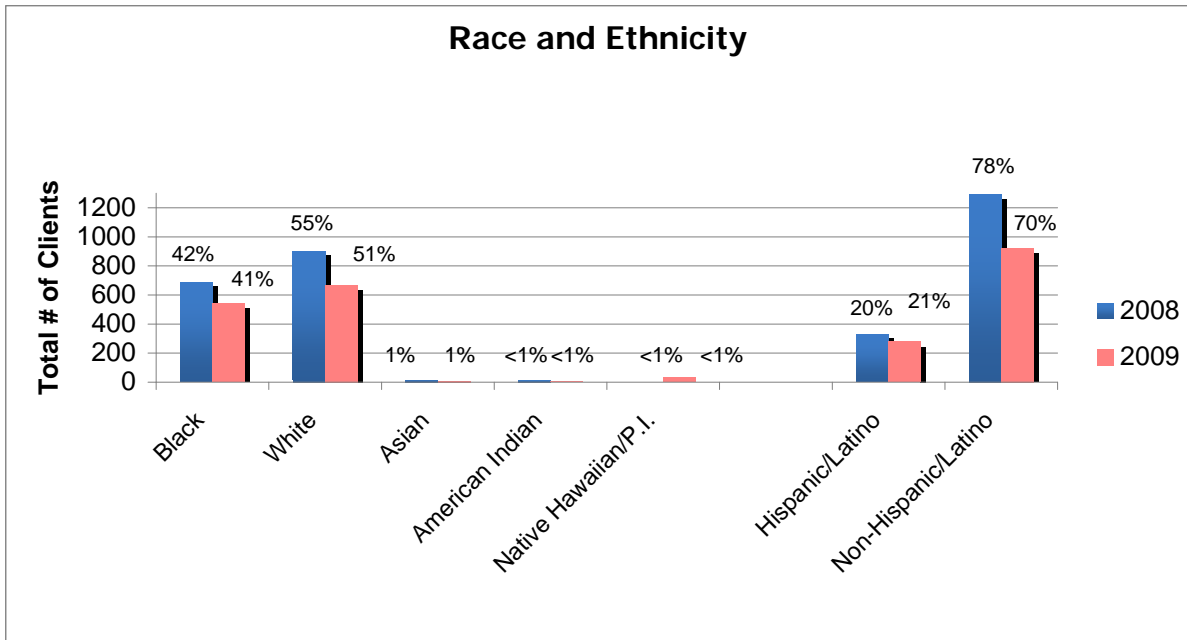
Peer Support: Peer Support Groups



\*Note: Clients can participate in more than one program.

## Client Demographics

Span served 1649 clients in FY 08 (July 1, 2007 to June 30, 2008) and 1312 clients in FY 09 (July 1, 2008 to June 30, 2009).



### Health Issues and Risks (FY09)

	<b>N</b>	<b>%</b>
HIV Positive:	288	22%
Hepatitis A	36	3%
Hepatitis B	52	4%
Hepatitis C	303	23%
HIV+ & Hepatitis C	171	13%
Needle Use	365	28%
Mental Health History	437	33%
Homeless or At Risk (at time of release )	802	61%

### Relationship Status at Intake (FY09)

	<b>N</b>	<b>%</b>
Single	730	56%
Significant Other	200	15%
Married	63	5%
Separated	40	3%
Divorced	74	6%
Widowed	15	1%
Unknown	191	15%
Total	1312	100%

### Drugs of Choice (FY09)

	<b>N</b>	<b>%</b>
Alcohol	232	18%
Cocaine	162	12%
Crack	99	8%
Heroin	383	29%
Marijuana/Hashish	234	18%
Methamphetamine	10	1%
Other (Benzos, Barbituates, Inhalants, etc)	38	3%
None	123	9%
Unknown	31	2%
Total	1312	100%

**Span Clients Released from State and Federal Prisons (FY09)**

Bay State Correctional Center	7	1%
Brooke House Pre-Release Program (State)	0	0%
Boston State Pre-Release Center	41	3%
Bridgewater State Hospital or Addiction Center	0	0%
Massachusetts Treatment Center (Bridgewater)	0	0%
MCI Cedar Junction (Walpole)	24	2%
MCI Concord	39	3%
MCI Concord- Jail Status	0	0%
MCI Framingham	93	7%
MCI Framingham- Jail Status	1	0%
MCI Norfolk	34	3%
MCI Plymouth (Plymouth Forestry Camp)	36	3%
MCI Shirley Medium	48	4%
MCI Shirley Minimum	8	1%
North Central Correctional Institution (NCCI) Gardner	10	1%
Northeastern Correctional Center (NECC-Concord Farm)	3	0%
OCCC- Jail Status	0	0%
Old Colony Correctional Center (OCCC) Medium	25	2%
Old Colony Correctional Center (OCCC) Minimum	1	0%
Pondville Correctional Center	42	3%
South Middlesex Correctional Center (Framingham Pre-Release)	45	3%
Souza-Baranowski Correctional Center (Shirley)	7	1%
Coolidge House Pre-Release Program	4	0%
<b>Total Released From State and Federal Prisons</b>	<b>468</b>	<b>36%</b>

**Other Release Status (FY09)**

Other (WIT, INS status, jails not listed above, other status, etc)	85	6%
Unknown	59	4%
<b>Total Other and Unknown</b>	<b>144</b>	<b>11%</b>

### Span Clients Released from County Houses of Correction (FY09)

Barnstable County (Bourne)	5	0%
Brooke House Pre-Release Program (County)	4	0%
Bristol County House of Correction (Dartmouth)	31	2%
Bristol County Jail	0	0%
Essex County (Middleton)	13	1%
Essex County Alternative (Lawrence Farm)	0	0%
Hampden County House of Correction (Ludlow)	6	0%
Hampshire County House of Correction (Northampton)	1	0%
Middlesex County House of Correction (Billerica)	69	5%
Middlesex County Jail (Cambridge Jail)	0	0%
Norfolk County Correctional Center (Dedham)	87	7%
Norfolk County Jail (Dedham- Jail Status)	7	1%
Norfolk County Pre-Release	3	0%
Plymouth County (Plymouth)	58	4%
Suffolk County House of Correction (South Bay)	392	30%
Suffolk County Jail (Nashua Street)	13	1%
Suffolk County Jail- Women	0	0%
Worcester County House of Correction (West Boylston)	11	1%
<b>Total Released from County Houses of Correction</b>	<b>700</b>	<b>53%</b>



**BOARD OF DIRECTORS**  
**June 30, 2009**

Steve Bryan  
Owner  
1810 Realty  
195 Ashmont St #B1  
Dorchester, MA 02124

Hugh McCray, LADAC  
Substance Abuse Coordinator  
Lemuel Shattuck Hospital  
170 Morton Street  
Boston, MA 02130

Edward Chase, Chair  
MassHousing Finance Corporation  
Community Services Dept  
One Beacon Street  
Boston, MA 02108

Mark Schueppert, JD, Treasurer  
Justice Resource Institute  
545 Boylston Street, Suite 700  
Boston, MA 02116  
617.450.0505 x 356

Kevin A. Davis, Executive Cttee  
Dimock Community Health Center  
55 Dimock St  
Roxbury, MA 02119

David Stone, MD  
Tufts NE Medical Center  
750 Washington Street #7010  
Boston, MA 02111

Abrigal Forrester  
Street Safe Boston  
Program Coordinator  
Boys & Girls Club of  
Yawkey Clubs of Roxbury  
115 Warren Street  
Roxbury, MA 02119

Mary Ellen Mastrorilli, Ph.D.  
Metropolitan College  
Dept Criminal Justice  
808 Commonwealth Ave  
Room 218  
Boston, MA 02215

Joan Katz, LICSW  
Forensic Social Worker  
PO Box 590659  
Newton Center, MA 02459

James Matesanz, M.Ed.  
Executive Cttee  
Superintendent of Jail Operations,  
Retired  
Norfolk County Sheriff's Office

**OUR STAFF**  
**June 30, 2009**

**Albert, Ron**  
**Bloom, Laurie**  
**Caldwell, Joseph**  
**Chin, Amy**  
**Cooper, Deborah**  
**Dangler, Kathryn**  
**Davis, Linda**  
**DeCosta, Jacqueline**  
**Figuroa, Victor**  
**Fox, Amy**  
**Gertner, Leo**  
**Gonzalez, Militza**  
**Harding, Sean**  
**Hernandez, U. Ivan**  
**Herstad, Kirsten**  
**Hollis, Khedra**  
**Johnson, Sabra**

**Law, George**  
**Levy, Lyn**  
**Madden, Annie**  
**Marino, Lisa**  
**Mercado, Monique**  
**Meskell, Melissa**  
**Montgomery, Annie**  
**Ofria, Amanda**  
**Perez, Heather**  
**Rivera, Osvaldo**  
**Robbins, April**  
**Robinson, Lawrence**  
**Rodriguez, Andrea**  
**Rodriguez, Eileen**  
**Santos, Joanna**  
**Silva, Rochelle**  
**Webb, Lucy**  
**Wilkinson, Tiana**

SPAN | INC

